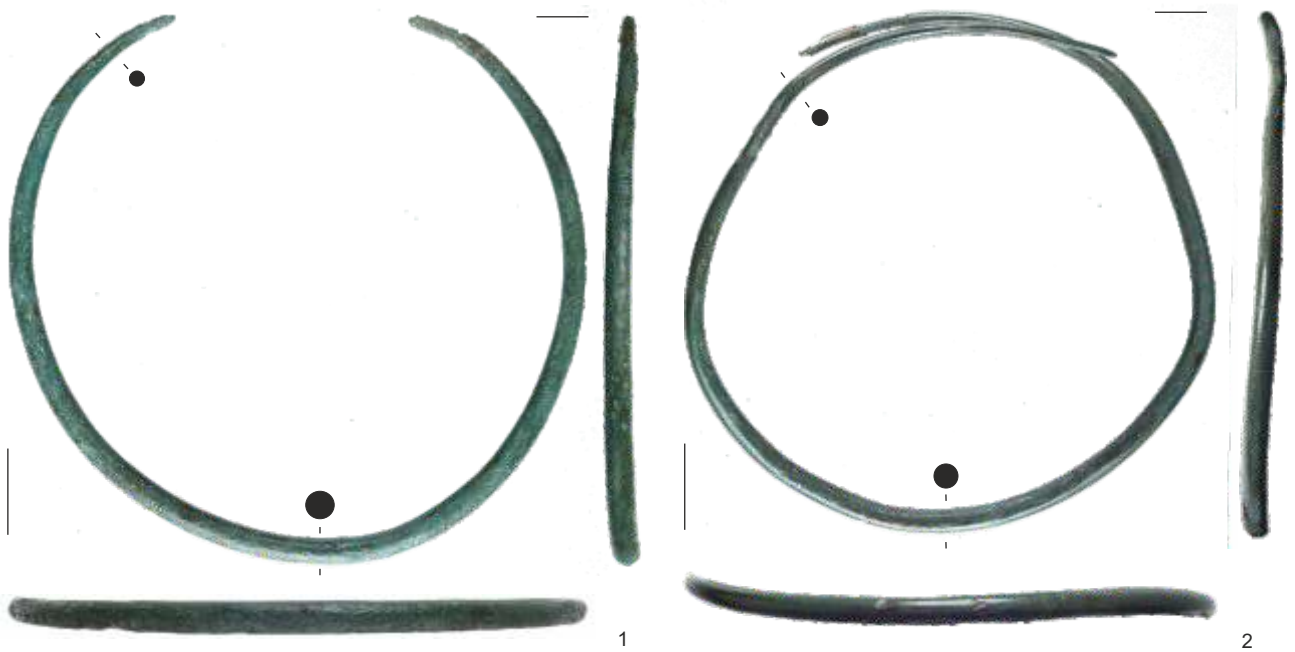
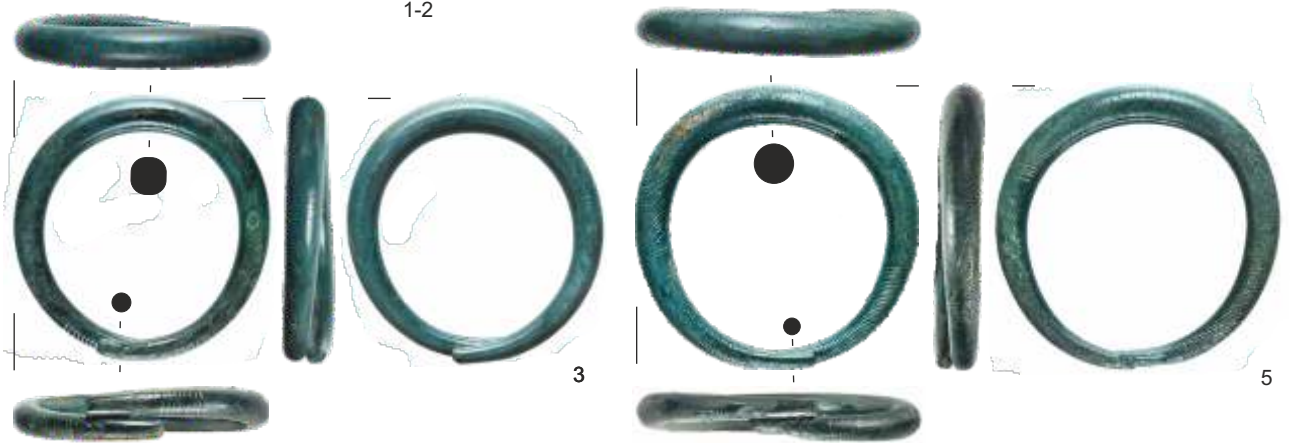


Tablice / Plates

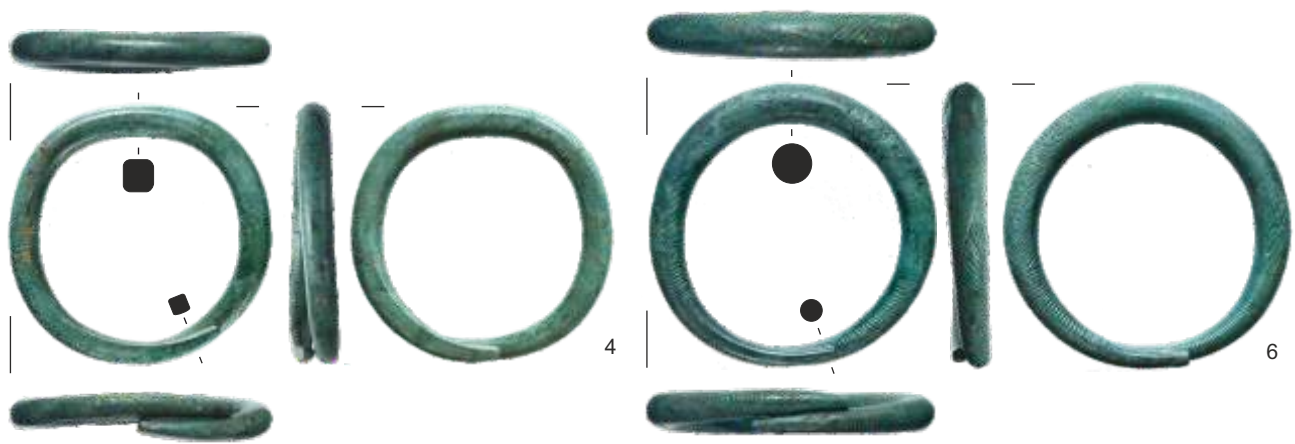
Tabl. I. Skarb z Falejówki (pow. sanocki): 1-2 – naszyjniki (1 – kat. I.1, 2 – kat. I.2), 3-6 – bransolety (3 – kat. I.3, 4 – kat. I.4, 5 – kat. I.5, 6 – kat. I.6). 1-6 – brąz.
Fot. D. Szuwalski, oprac. P. Kotowicz i G. Glinianowicz
Pl. I. Hoard from Falejówka (Sanok distr.): 1-2 – necklaces (1 – cat. I.1, 2 – cat. I.2), 3-6 – bracelets (3 – cat. I.3, 4 – cat. I.4, 5 – cat. I.5, 6 – cat. I.6). 1-6 – bronze.
Photo D. Szuwalski, processing P. Kotowicz and G. Glinianowicz



0 5 cm
1-2

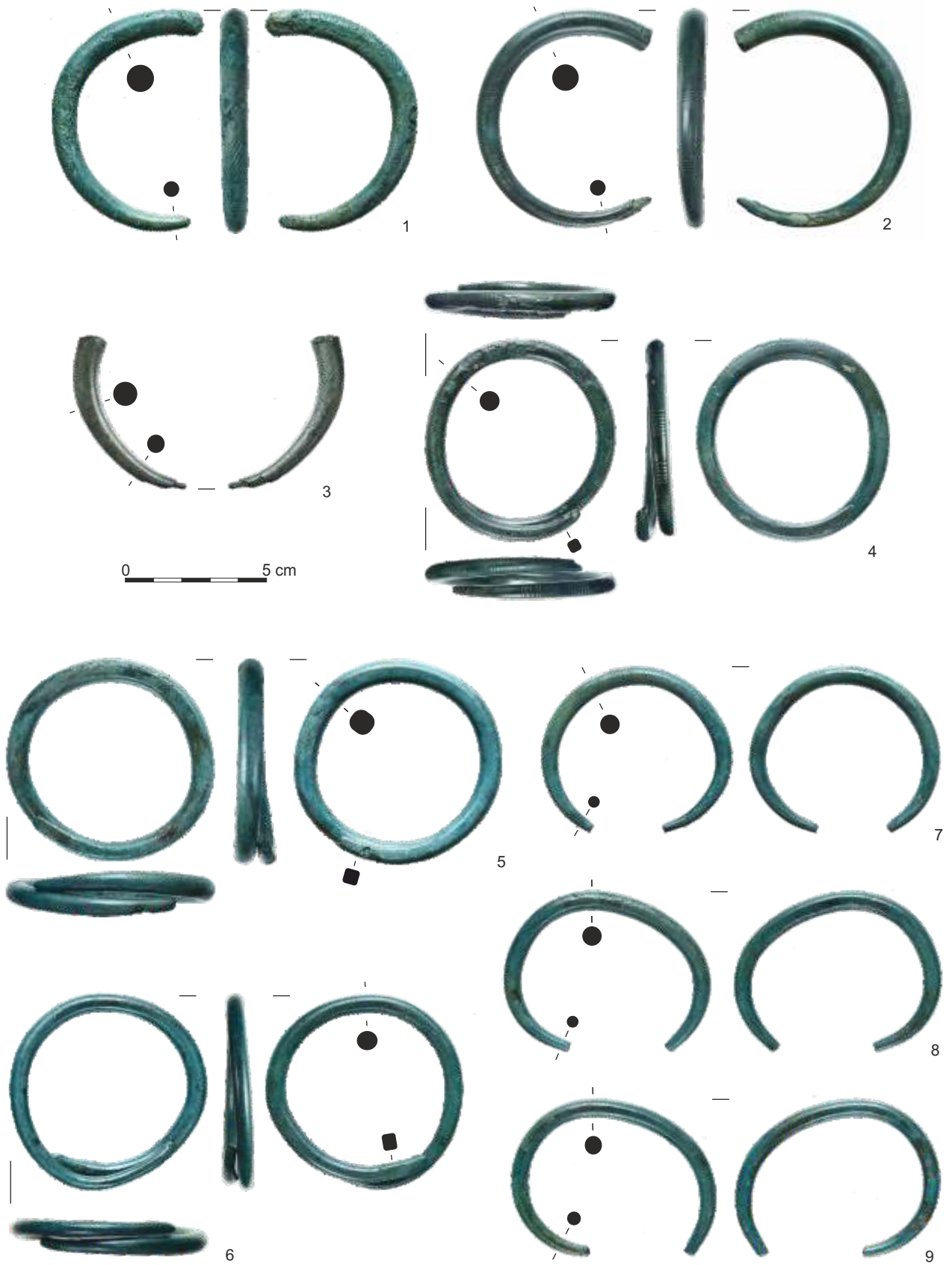


0 5 cm
3-6



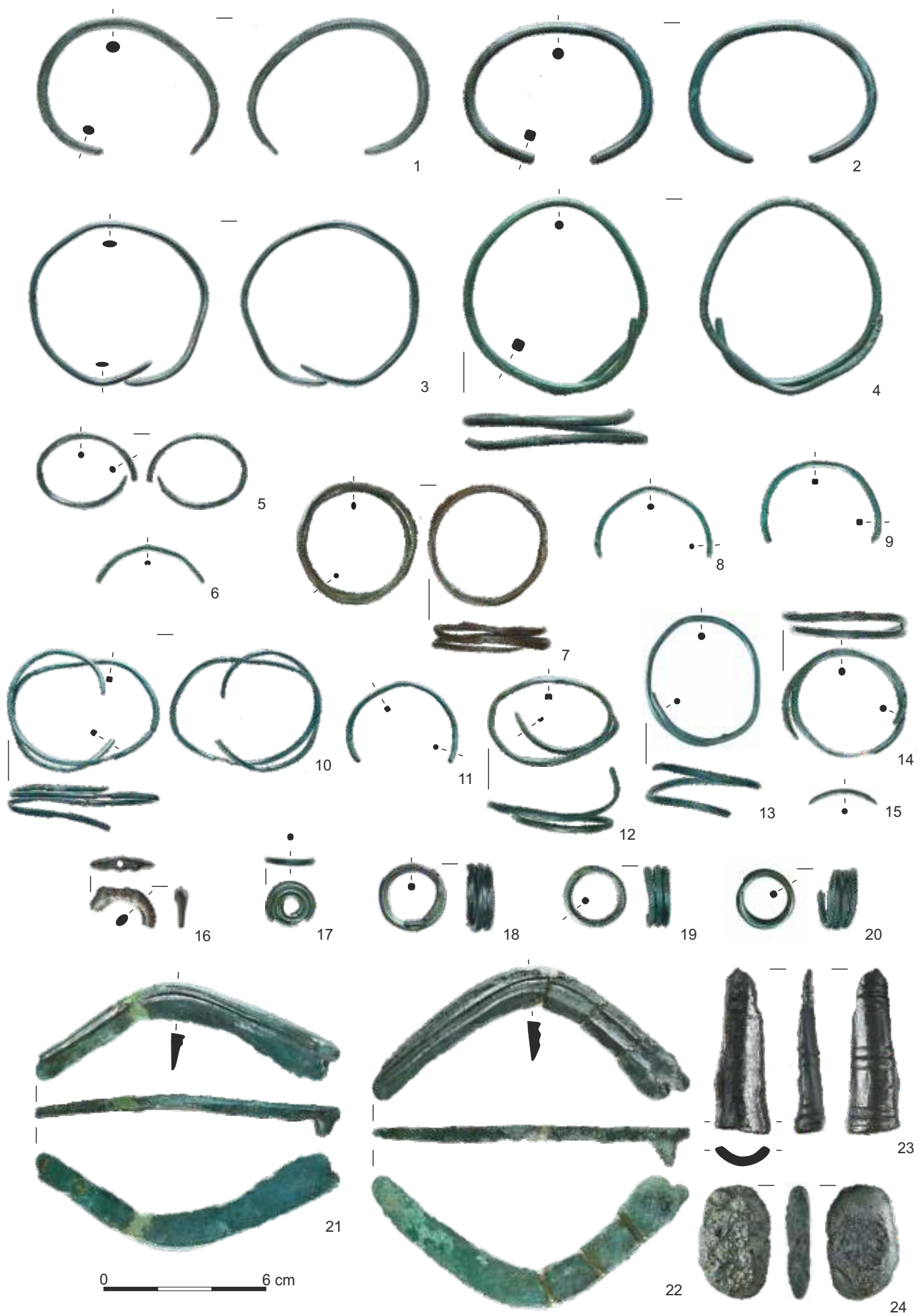
Tabl. II. Skarb z Falejówki (pow. sanocki): 1-9 – bransolety (1 – kat. I.7, 2 – kat. I.8, 3 – kat. I.9, 4 – kat. I.10, 5 – kat. I.11, 6 – kat. I.12, 7 – kat. I.13, 8 – kat. I.14, 9 – kat. I.15). 1-9 – brąz. Fot. D. Szuwalski, oprac. P. Kotowicz i G. Glinianowicz

Pl. II. Hoard from Falejówka (Sanok distr.): 1-9 – bracelets (1 – cat. I.7, 2 – cat. I.8, 3 – cat. I.9, 4 – cat. I.10, 5 – cat. I.11, 6 – cat. I.12, 7 – cat. I.13, 8 – cat. I.14, 9 – cat. I.15). 1-9 – bronze. Photo D. Szuwalski, processing P. Kotowicz and G. Glinianowicz



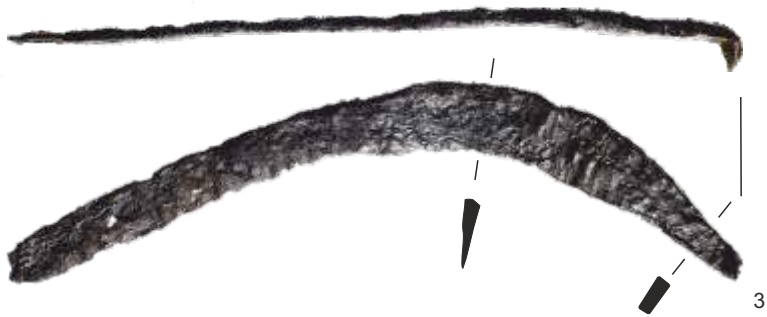
Tabl. III. Skarb z Falejówki (pow. sanocki): 1-2 – bransolety (1 – kat. I.16, 2 – kat. I.17), 3-15, 17-20 – ozdoby (3 – kat. I.18, 4 – kat. I.19, 5 – kat. I.20, 6 – kat. I.21, 7 – kat. I.22, 8 – kat. I.23, 9 – kat. I.24, 10 – kat. I.25, 11 – kat. I.26, 12 – kat. I.27, 13 – kat. I.28, 14 – kat. I.29, 15 – kat. I.30, 17 – kat. I.32, 18 – kat. I.33, 19 – kat. I.34, 20 – kat. I.35), 16 – ochroniacz końca szpili (kat. I.31), 21-22 – sierpy (21 – kat. I.36, 22 – kat. I.37), 23 – fragment tulei grotu (?) (kat. I.38), 24 – placek (kat. I.39). 1-24 – brąz. Fot. D. Szuwalski, oprac. P. Kotowicz i G. Glinianowicz

Pl. III. Hoard from Falejówka (Sanok distr.): 1-2 – bracelets (1 – cat. I.16, 2 – cat. I.17), 3-15, 17-20 – ornaments (3 – cat. I.18, 4 – cat. I.19, 5 – cat. I.20, 6 – cat. I.21, 7 – cat. I.22, 8 – cat. I.23, 9 – cat. I.24, 10 – cat. I.25, 11 – cat. I.26, 12 – cat. I.27, 13 – cat. I.28, 14 – cat. I.29, 15 – cat. I.30, 17 – cat. I.32, 18 – cat. I.33, 19 – cat. I.34, 20 – cat. I.35), 16 – protector of pin terminal (cat. I.31), 21-22 – sickles (21 – cat. I.36, 22 – cat. I.37), 23 – fragment of shafted weapon's socket (?) (cat. I.38), 24 – casting clump (cat. I.39). 1-24 – bronze. Photo D. Szuwalski, processing P. Kotowicz and G. Glinianowicz



Tabl. IV. Skarb z Międzybrodzia (pow. sanocki): 1-5 – sierpy (1 – kat. II.1, 2 – kat. II.2, 3 – kat. II.3, 4 – kat. II.4, 5 – kat. II.5). 1-5 – żelazo. Fot. D. Szuwalski, oprac. P. Kotowicz i G. Glinianowicz

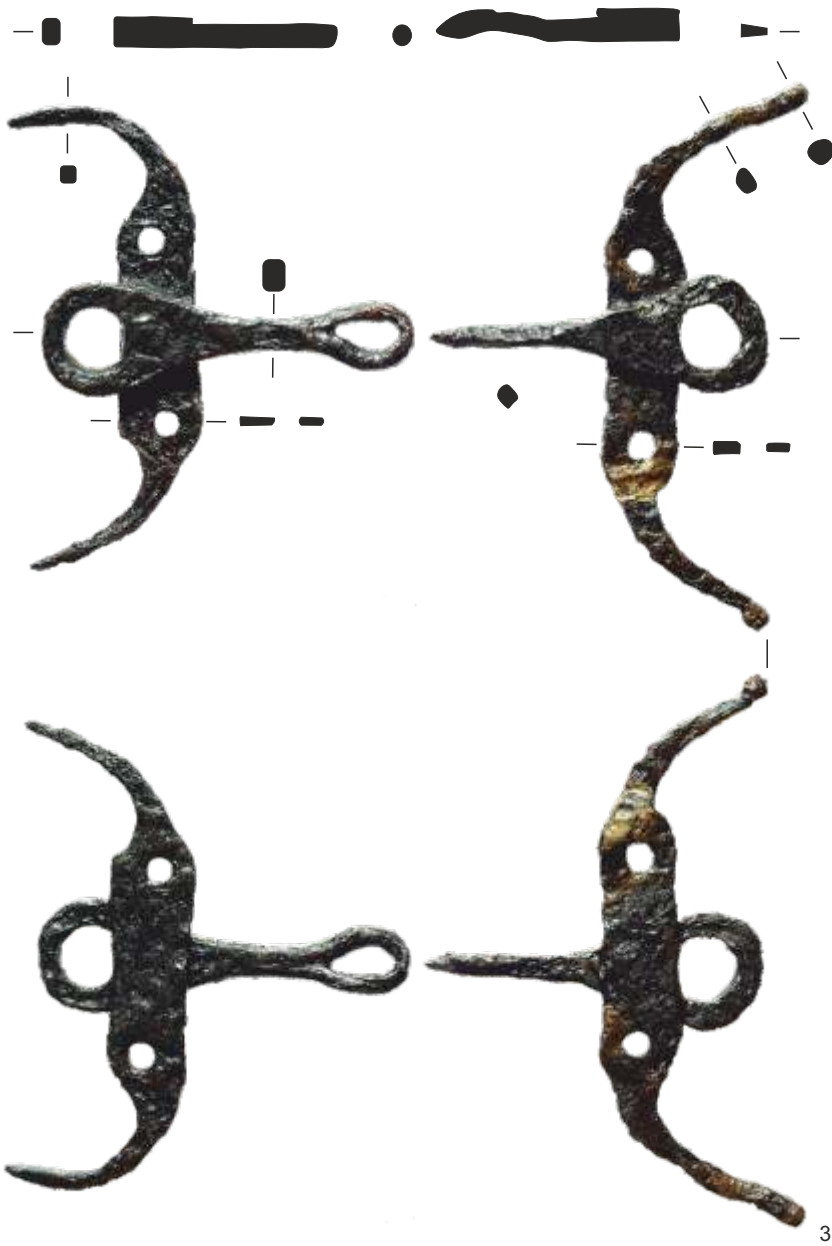
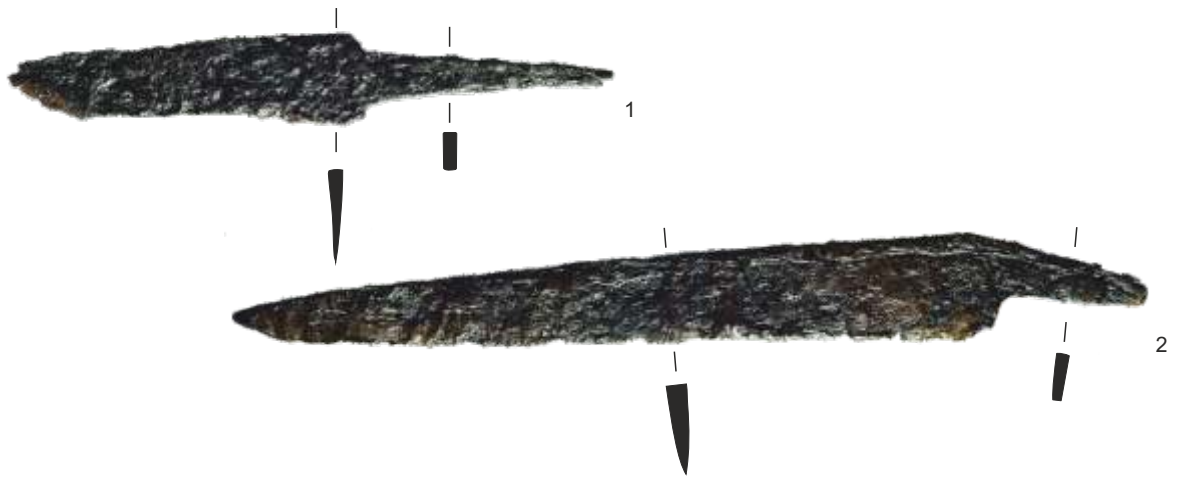
Pl. IV. Hoard from Międzybrodzie (Sanok distr.): 1-5 – sickles (1 – cat. II.1, 2 – cat. II.2, 3 – cat. II.3, 4 – cat. II.4, 5 – cat. II.5). 1-5 – iron. Photo D. Szuwalski, processing P. Kotowicz and G. Glinianowicz



0 5 cm

Tabl. V. Skarb z Międzybrodzia (pow. sanocki): 1-2 – noże (1 – kat. II.6, 2 – kat. II.7), 3 – wędzidło (kat. II.8). 1-3 – żelazo. Fot. D. Szuwalski, oprac. P. Kotowicz i G. Glinianowicz

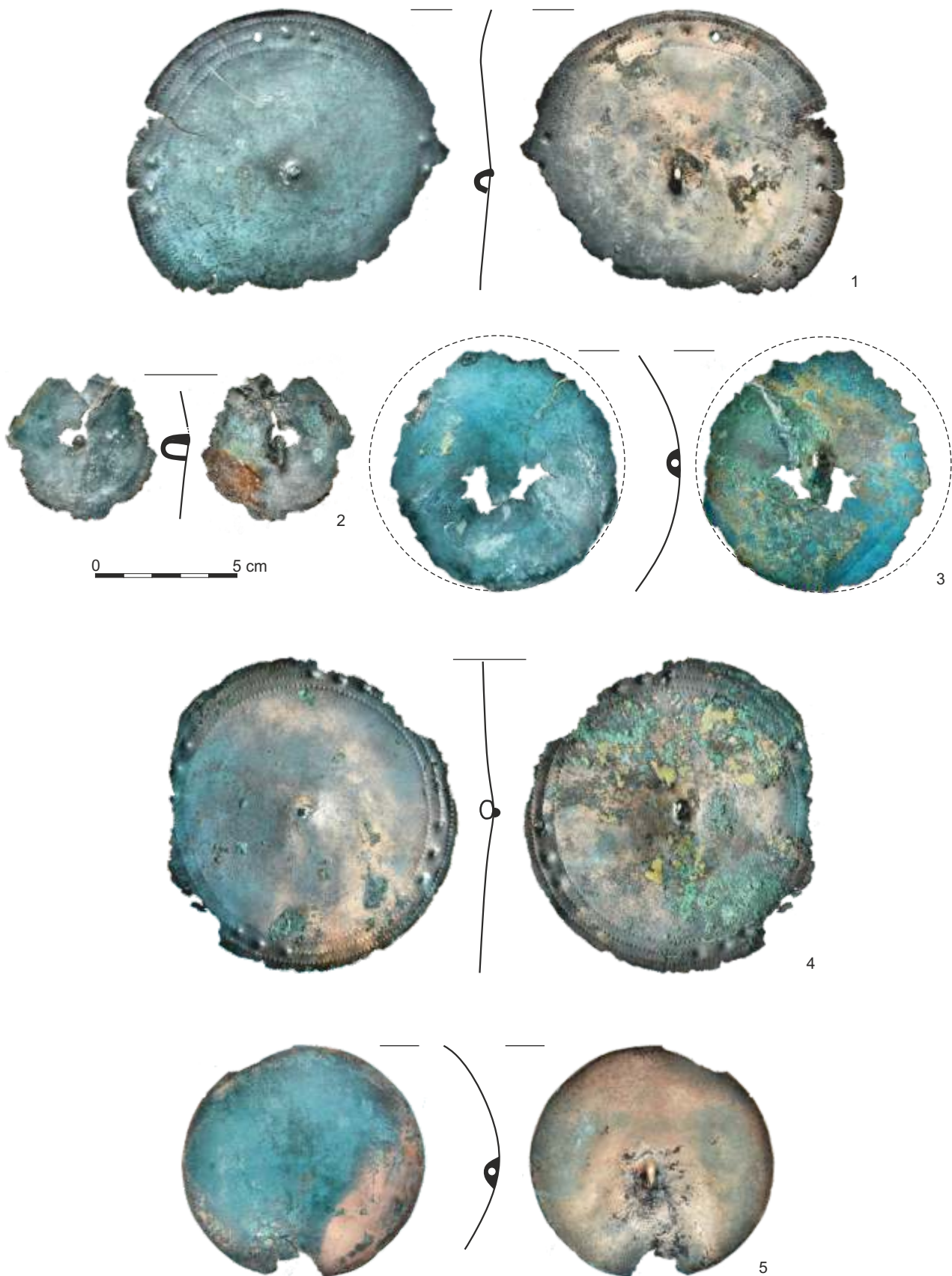
Pl. V. Hoard from Międzybrodzie (Sanok distr.): 1-2 – knives (1 – cat. II.6, 2 – cat. II.7), 3 – bit (cat. II.8). 1-3 – iron. Photo D. Szuwalski, processing P. Kotowicz and G. Glinianowicz



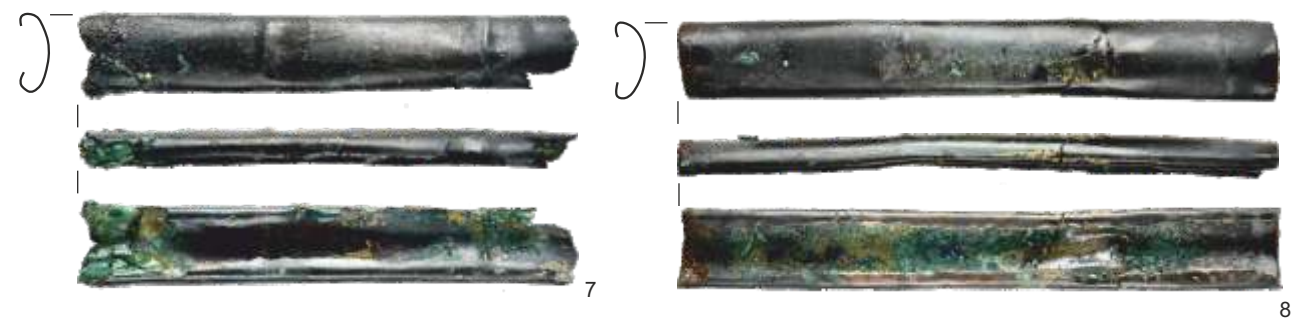
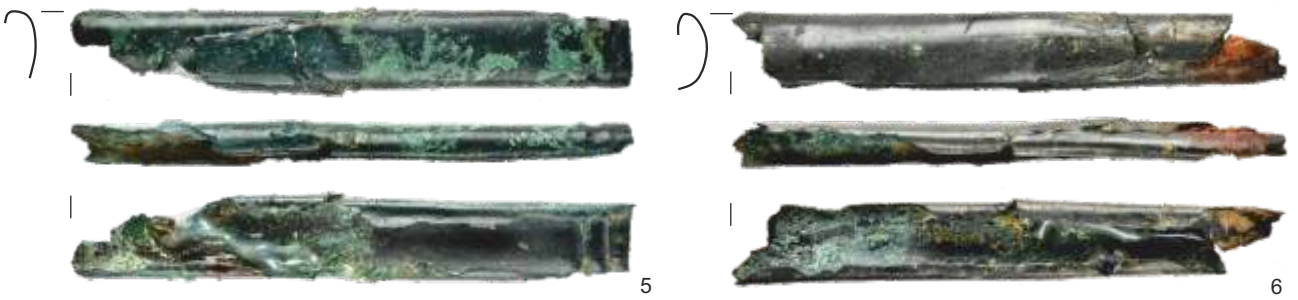
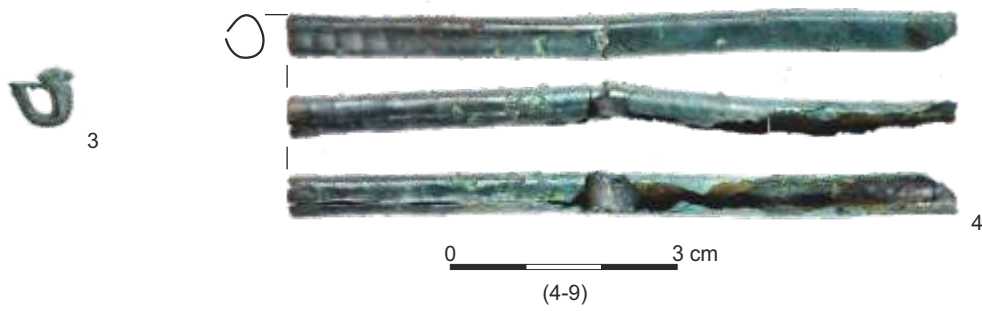
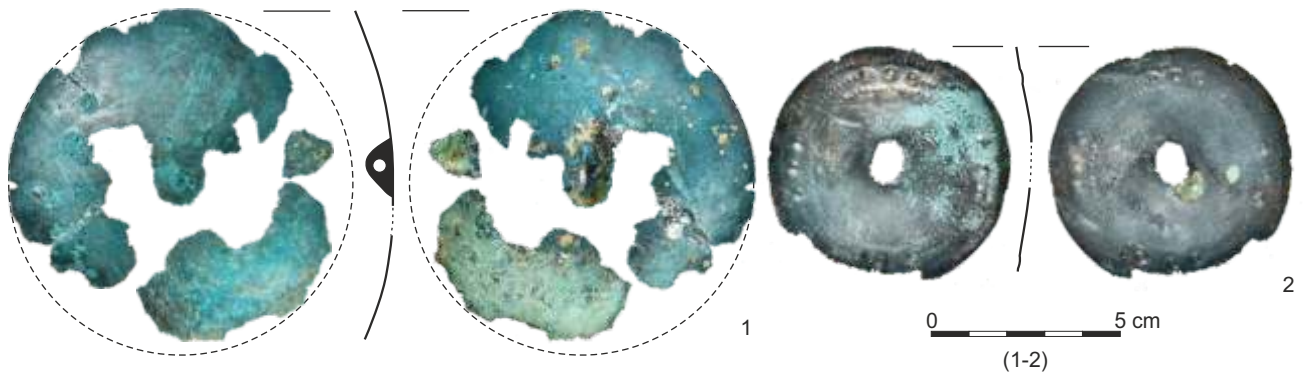
0 5 cm

Tabl. VI. Skarb z Sanoka (Białej Góry): 1-5 – tarczki (1 – kat. III.1, 2 – kat. III.2, 3 – kat. III.3, 4 – kat. III.4, 5 – kat. III.5). 1-5 – brąz. Fot. D. Szuwalski, oprac. P. Kotowicz i G. Glinianowicz

Pl. VI. Hoard from Sanok (Biała-Góra): 1-5 – discs (1 – cat. III.1, 2 – cat. III.2, 3 – cat. III.3, 4 – cat. III.4, 5 – cat. III.5). 1-5 – bronze. Photo D. Szuwalski, processing P. Kotowicz and G. Glinianowicz

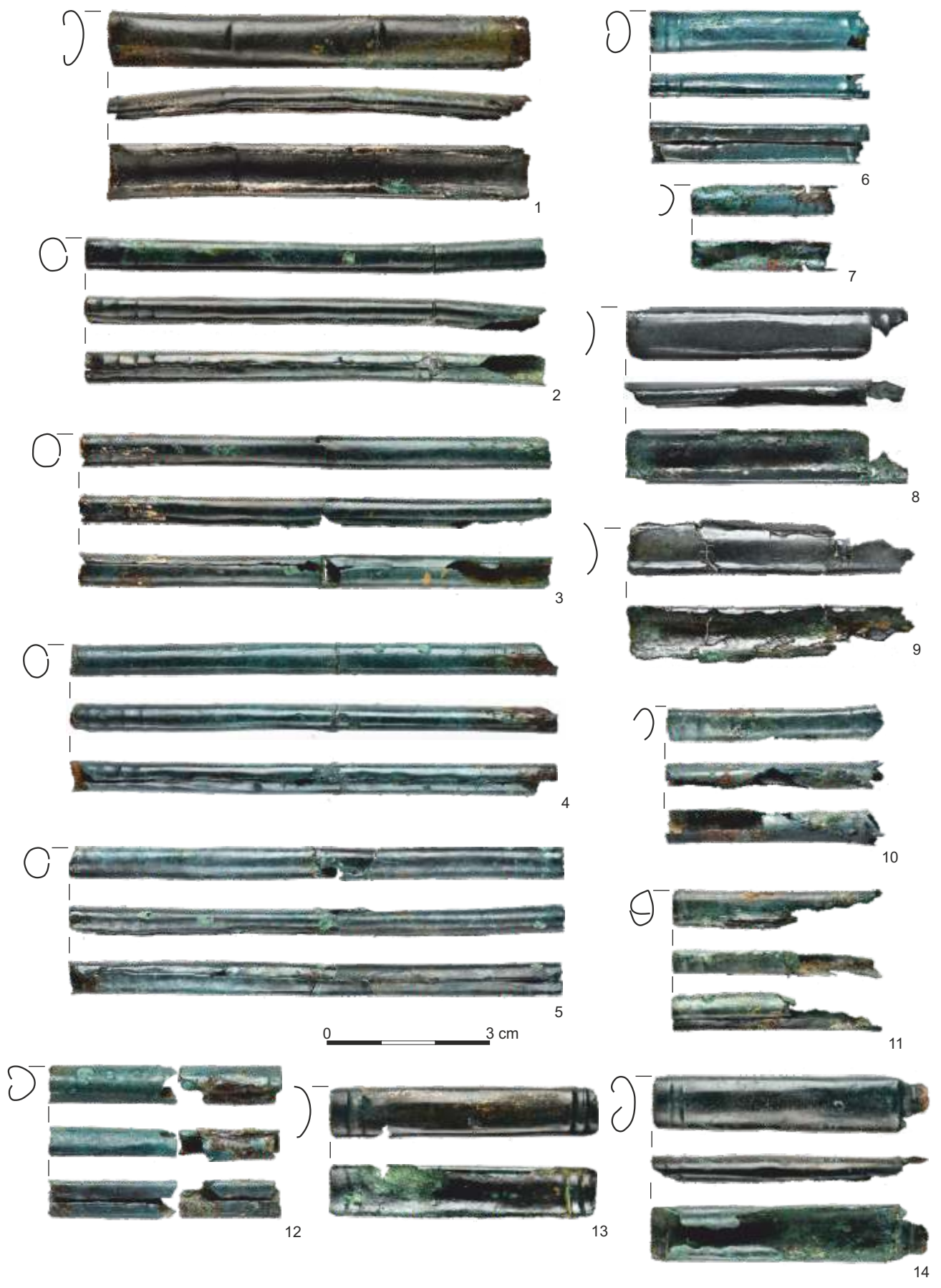


Tabl. VII. Skarb z Sanoka (Białej Góry): 1-2 – tarczki (1 – kat. III.6, 2 – kat. III.7), 3 – nit od tarczki (kat. III.8), 4-9 – okucia (4 – kat. III.9, 5 – kat. III.10, 6 – kat. III.11, 7 – kat. III.12, 8 – kat. III.13, 9 – kat. III.14). 1-9 – brąz. Fot. D. Szuwalski, oprac. P. Kotowicz i G. Glinianowicz
Pl. VII. Hoard from Sanok (Biała-Góra): 1-5 – discs (1 – cat. III.6, 2 – cat. III.7), 3 – disc's rivet (cat. III.8), 4-9 – fittings (4 – cat. III.9, 5 – cat. III.10, 6 – cat. III.11, 7 – cat. III.12, 8 – cat. III.13, 9 – cat. III.14). 1-9 – bronze. Photo D. Szuwalski, processing P. Kotowicz and G. Glinianowicz



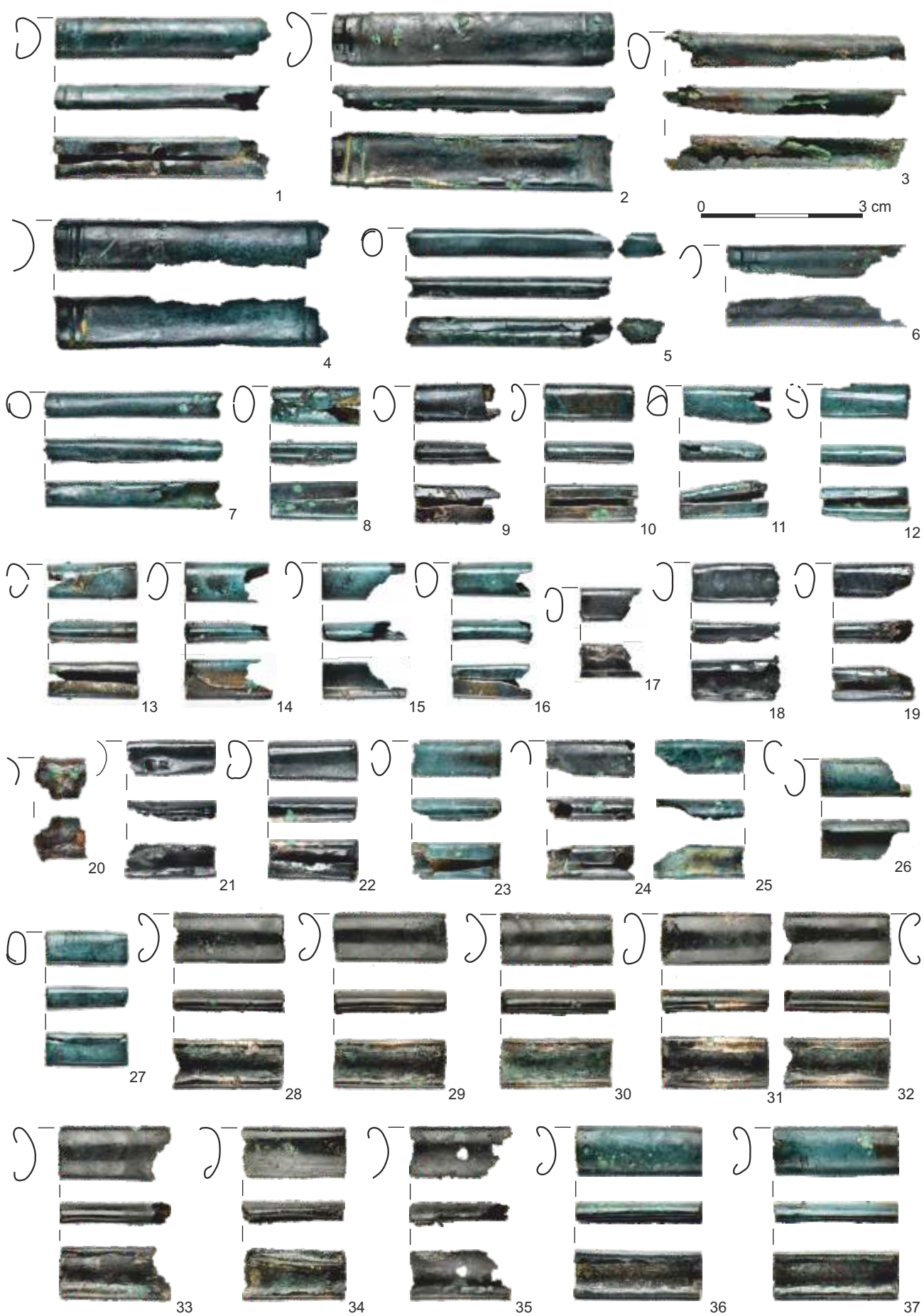
Tabl. VIII. Skarb z Sanoka (Białej Góry): 1-14 – okucia (1 – kat. III.15, 2 – kat. III.16, 3 – kat. III.17, 4 – kat. III.18, 5 – kat. III.19, 6 – kat. III.20, 7 – kat. III.21, 8 – kat. III.22, 9 – kat. III.23, 10 – kat. III.24, 11 – kat. III.25, 12 – kat. III.26, 13 – kat. III.27, 14 – kat. III.28). 1-14 – brąz. Fot. D. Szuwalski, oprac. P. Kotowicz i G. Glinianowicz

Pl. VIII. Hoard from Sanok (Biała-Góra): 1-14 – fittings (1 – cat. III.15, 2 – cat. III.16, 3 – cat. III.17, 4 – cat. III.18, 5 – cat. III.19, 6 – cat. III.20, 7 – cat. III.21, 8 – cat. III.22, 9 – cat. III.23, 10 – cat. III.24, 11 – cat. III.25, 12 – cat. III.26, 13 – cat. III.27, 14 – cat. III.28). 1-14 – bronze. Photo D. Szuwalski, processing P. Kotowicz and G. Glinianowicz



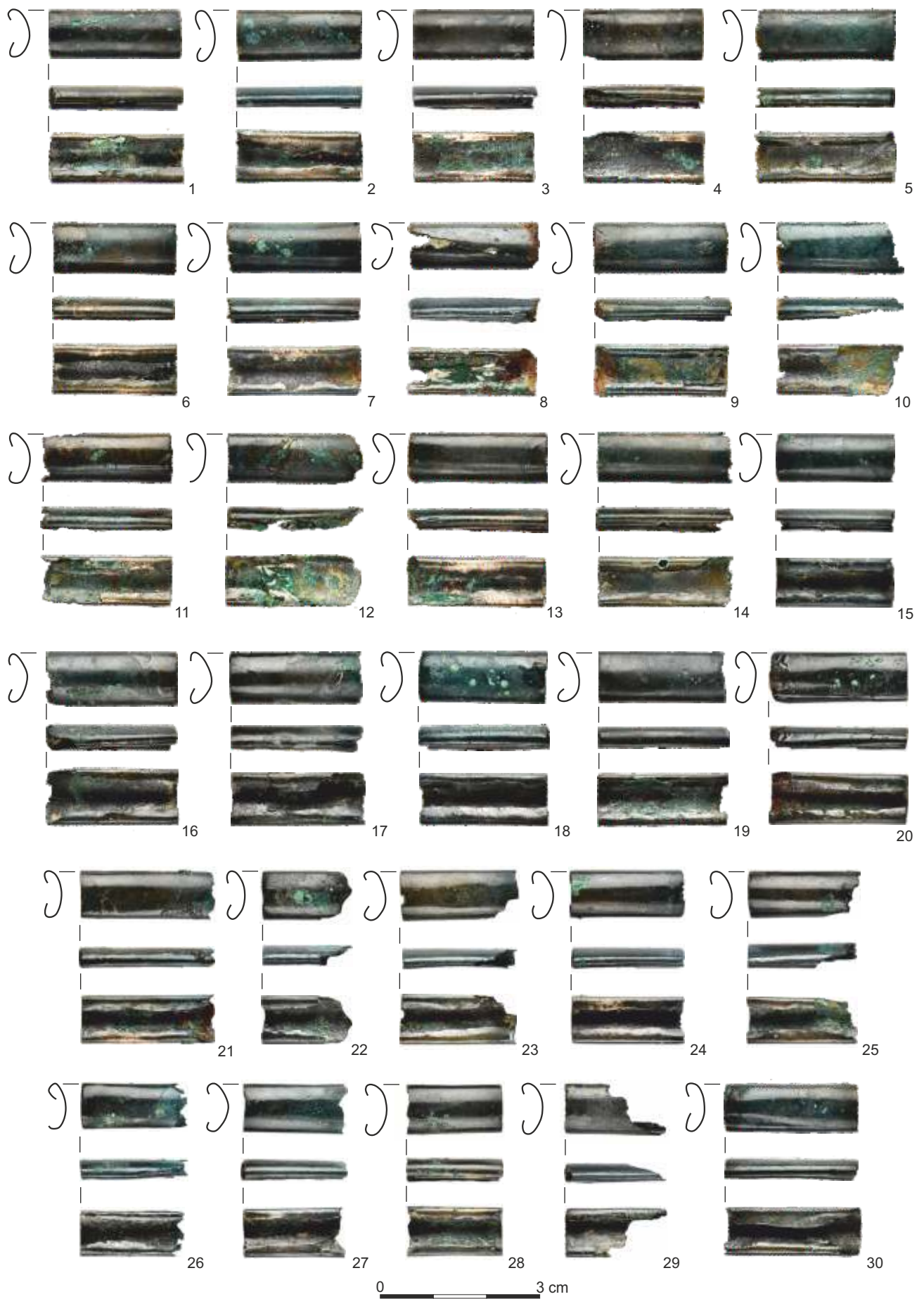
Tabl. IX. Skarb z Sanoka (Białej Góry): 1-37 – okucia (1 – kat. III.29, 2 – kat. III.30, 3 – kat. III.31, 4 – kat. III.32, 5 – kat. III.33, 6 – kat. III.34, 7 – kat. III.35, 8 – kat. III.37, 9 – kat. III.38, 10 – kat. III.39, 11 – kat. III.40, 12 – kat. III.41, 13 – kat. III.44, 14 – kat. III.45, 15 – kat. III.47, 16 – kat. III.48, 17 – kat. III.50, 18 – kat. III.51, 19 – kat. III.52, 20 – kat. III.53, 21 – kat. III.55, 22 – kat. III.56, 23 – kat. III.57, 24 – kat. III.58, 25 – kat. III.59, 26 – kat. III.60, 27 – kat. III.63, 28 – kat. III.64, 29 – kat. III.65, 30 – kat. III.66, 31 – kat. III.67, 32 – kat. III.68, 33 – kat. III.69, 34 – kat. III.70, 35 – kat. III.71, 36 – kat. III.72, 37 – kat. III.73). 1-37 – brąz. Fot. D. Szuwalski, oprac. P. Kotowicz i G. Glinianowicz

Pl. IX. Hoard from Sanok (Biała-Góra): 1-37 – fittings (1 – cat. III.29, 2 – cat. III.30, 3 – cat. III.31, 4 – cat. III.32, 5 – cat. III.33, 6 – cat. III.34, 7 – cat. III.35, 8 – cat. III.37, 9 – cat. III.38, 10 – cat. III.39, 11 – cat. III.40, 12 – cat. III.41, 13 – cat. III.44, 14 – cat. III.45, 15 – cat. III.47, 16 – cat. III.48, 17 – cat. III.50, 18 – cat. III.51, 19 – cat. III.52, 20 – cat. III.53, 21 – cat. III.55, 22 – cat. III.56, 23 – cat. III.57, 24 – cat. III.58, 25 – cat. III.59, 26 – cat. III.60, 27 – cat. III.63, 28 – cat. III.64, 29 – cat. III.65, 30 – cat. III.66, 31 – cat. III.67, 32 – cat. III.68, 33 – cat. III.69, 34 – cat. III.70, 35 – cat. III.71, 36 – cat. III.72, 37 – cat. III.73). 1-37 – bronze. Photo D. Szuwalski, processing P. Kotowicz and G. Glinianowicz



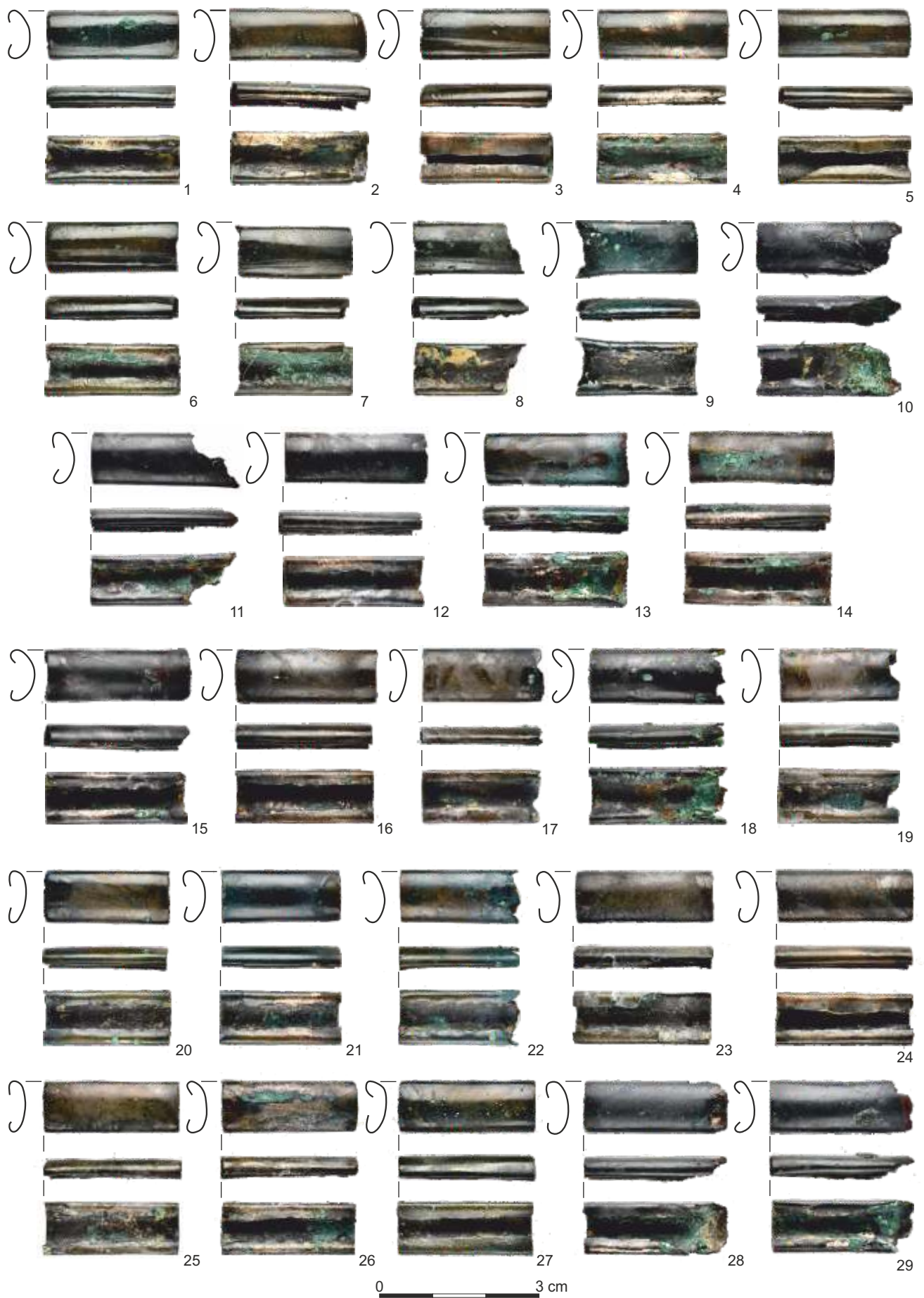
Tabl. X. Skarb z Sanoka (Białej Góry): 1-30 – okucia (1 – kat. III.74, 2 – kat. III.75, 3 – kat. III.76, 4 – kat. III.77, 5 – kat. III.78, 6 – kat. III.79, 7 – kat. III.80, 8 – kat. III.81, 9 – kat. III.82, 10 – kat. III.83, 11 – kat. III.84, 12 – kat. III.85, 13 – kat. III.86, 14 – kat. III.87, 15 – kat. III.88, 16 – kat. III.89, 17 – kat. III.90, 18 – kat. III.91, 19 – kat. III.92, 20 – kat. III.93, 21 – kat. III.94, 22 – kat. III.95, 23 – kat. III.96, 24 – kat. III.97, 25 – kat. III.98, 26 – kat. III.99, 27 – kat. III.100, 28 – kat. III.101, 29 – kat. III.102, 30 – kat. III.103). 1-30 – brąz. Fot. D. Szuwalski, oprac. P. Kotowicz i G. Glinianowicz

Pl. X. Hoard from Sanok (Biała-Góra): 1-30 – fittings (1 – cat. III.74, 2 – cat. III.75, 3 – cat. III.76, 4 – cat. III.77, 5 – cat. III.78, 6 – cat. III.79, 7 – cat. III.80, 8 – cat. III.81, 9 – cat. III.82, 10 – cat. III.83, 11 – cat. III.84, 12 – cat. III.85, 13 – cat. III.86, 14 – cat. III.87, 15 – cat. III.88, 16 – cat. III.89, 17 – cat. III.90, 18 – cat. III.91, 19 – cat. III.92, 20 – cat. III.93, 21 – cat. III.94, 22 – cat. III.95, 23 – cat. III.96, 24 – cat. III.97, 25 – cat. III.98, 26 – cat. III.99, 27 – cat. III.100, 28 – cat. III.101, 29 – cat. III.102, 30 – cat. III.103). 1-30 – bronze. Photo D. Szuwalski, processing P. Kotowicz and G. Glinianowicz



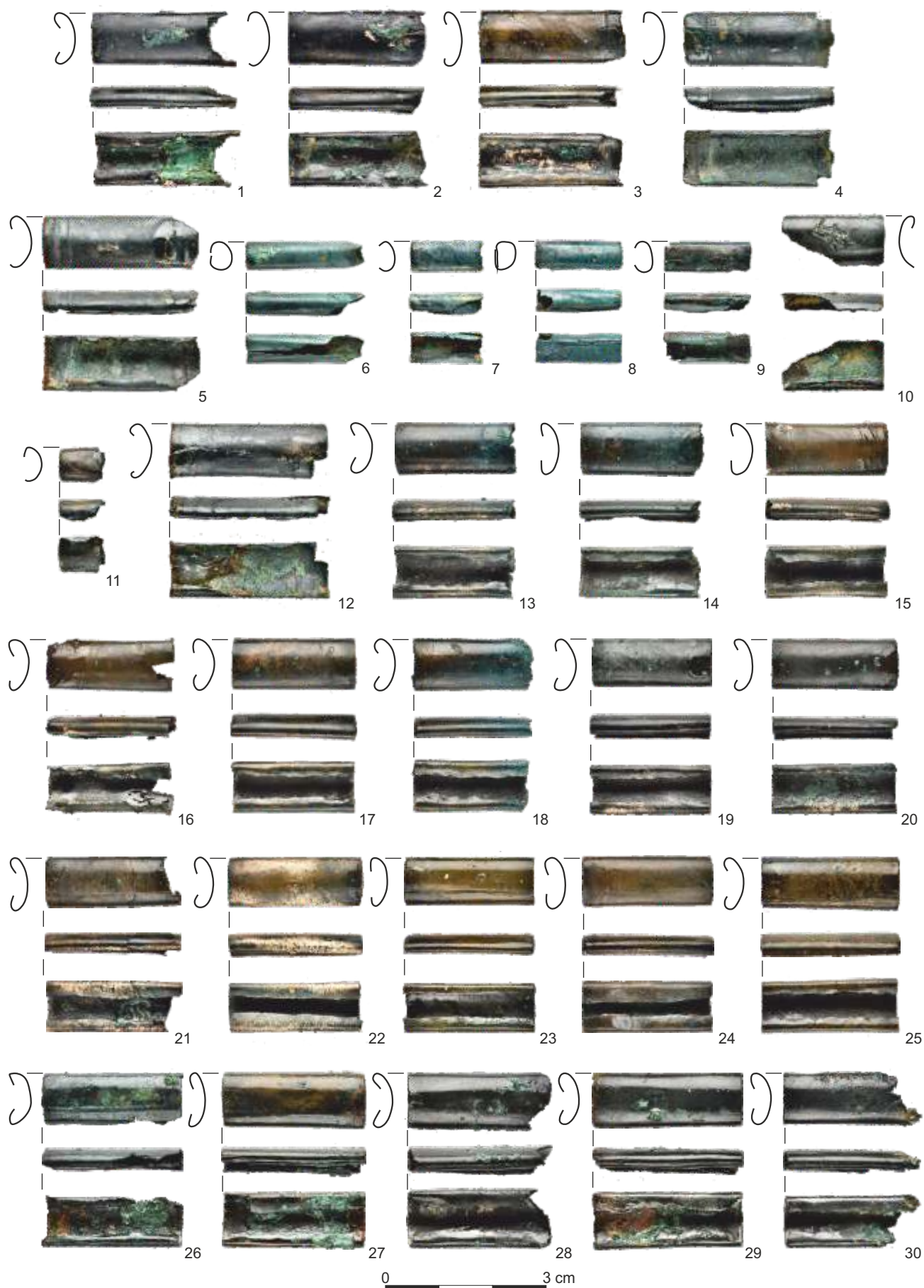
Tabl. XI. Skarb z Sanoka (Białej Góry): 1-29 – okucia (1 – kat. III.104, 2 – kat. III.105, 3 – kat. III.106, 4 – kat. III.107, 5 – kat. III.108, 6 – kat. III.109, 7 – kat. III.110, 8 – kat. III.111, 9 – kat. III.112, 10 – kat. III.113, 11 – kat. III.114, 12 – kat. III.115, 13 – kat. III.116, 14 – kat. III.117, 15 – kat. III.118, 16 – kat. III.119, 17 – kat. III.120, 18 – kat. III.121, 19 – kat. III.122, 20 – kat. III.123, 21 – kat. III.124, 22 – kat. III.125, 23 – kat. III.126, 24 – kat. III.127, 25 – kat. III.128, 26 – kat. III.129, 27 – kat. III.130, 28 – kat. III.131, 29 – kat. III.132). 1-29 – brąz. Fot. D. Szuwalski, oprac. P. Kotowicz i G. Glinianowicz

Pl. XI. Hoard from Sanok (Biała-Góra): 1-29 – fittings (1 – cat. III.104, 2 – cat. III.105, 3 – cat. III.106, 4 – cat. III.107, 5 – cat. III.108, 6 – cat. III.109, 7 – cat. III.110, 8 – cat. III.111, 9 – cat. III.112, 10 – cat. III.113, 11 – cat. III.114, 12 – cat. III.115, 13 – cat. III.116, 14 – cat. III.117, 15 – cat. III.118, 16 – cat. III.119, 17 – cat. III.120, 18 – cat. III.121, 19 – cat. III.122, 20 – cat. III.123, 21 – cat. III.124, 22 – cat. III.125, 23 – cat. III.126, 24 – cat. III.127, 25 – cat. III.128, 26 – cat. III.129, 27 – cat. III.130, 28 – cat. III.131, 29 – cat. III.132). 1-29 – bronze. Photo D. Szuwalski, processing P. Kotowicz and G. Glinianowicz

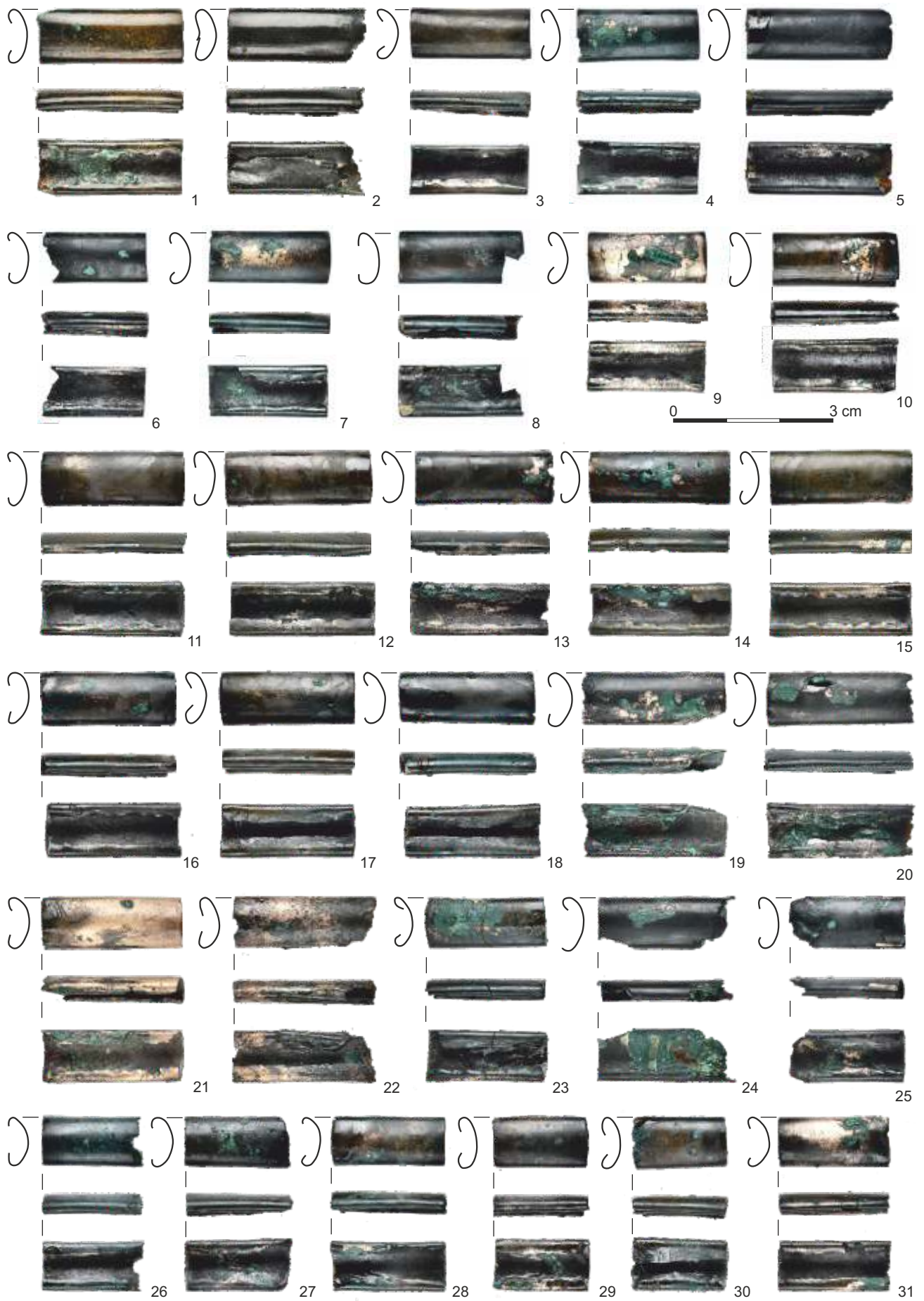


Tabl. XII. Skarb z Sanoka (Białej Góry): 1-30 – okucia (1 – kat. III.133, 2 – kat. III.134, 3 – kat. III.135, 4 – kat. III.136, 5 – kat. III.140, 6 – kat. III.142, 7 – kat. III.143, 8 – kat. III.144, 9 – kat. III.145, 10 – kat. III.147, 11 – kat. III.148, 12 – kat. III.149, 13 – kat. III.150, 14 – kat. III.151, 15 – kat. III.152, 16 – kat. III.153, 17 – kat. III.154, 18 – kat. III.155, 19 – kat. III.156, 20 – kat. III.157, 21 – kat. III.158, 22 – kat. III.159, 23 – kat. III.160, 24 – kat. III.161, 25 – kat. III.162, 26 – kat. III.163, 27 – kat. III.164, 28 – kat. III.165, 29 – kat. III.166, 30 – kat. III.167). 1-30 – brąz. Fot. D. Szuwalski, oprac. P. Kotowicz i G. Glinianowicz

Pl. XII. Hoard from Sanok (Biała-Góra): 1-30 – fittings (1 – cat. III.133, 2 – cat. III.134, 3 – cat. III.135, 4 – cat. III.136, 5 – cat. III.140, 6 – cat. III.142, 7 – cat. III.143, 8 – cat. III.144, 9 – cat. III.145, 10 – cat. III.147, 11 – cat. III.148, 12 – cat. III.149, 13 – cat. III.150, 14 – cat. III.151, 15 – cat. III.152, 16 – cat. III.153, 17 – cat. III.154, 18 – cat. III.155, 19 – cat. III.156, 20 – cat. III.157, 21 – cat. III.158, 22 – cat. III.159, 23 – cat. III.160, 24 – cat. III.161, 25 – cat. III.162, 26 – cat. III.163, 27 – cat. III.164, 28 – cat. III.165, 29 – cat. III.166, 30 – cat. III.167). 1-30 – bronze. Photo D. Szuwalski, processing P. Kotowicz and G. Glinianowicz



Tabl. XIII. Skarb z Sanoka (Białej Góry): 1-31 – okucia (1 – kat. III.168, 2 – kat. III.168, 3 – kat. III.170, 4 – kat. III.171, 5 – kat. III.172, 6 – kat. III.173, 7 – kat. III.174, 8 – kat. III.175, 9 – kat. III.176, 10 – kat. III.177, 11 – kat. III.178, 12 – kat. III.179, 13 – kat. III.180, 14 – kat. III.181, 15 – kat. III.182, 16 – kat. III.183, 17 – kat. III.184, 18 – kat. III.185, 19 – kat. III.186, 20 – kat. III.187, 21 – kat. III.188, 22 – kat. III.189, 23 – kat. III.190, 24 – kat. III.191, 25 – kat. III.192, 26 – kat. III.193, 27 – kat. III.194, 28 – kat. III.195, 29 – kat. III.196, 30 – kat. III.197, 31 – kat. III.198). 1-31 – brąz. Fot. D. Szuwalski, oprac. P. Kotowicz i G. Glinianowicz Pl. XIII. Hoard from Sanok (Biała-Góra): 1-31 – fittings (1 – cat. III.168, 2 – cat. III.168, 3 – cat. III.170, 4 – cat. III.171, 5 – cat. III.172 6 – cat. III.173, 7 – cat. III.174, 8 – cat. III.175, 9 – cat. III.176, 10 – cat. III.177, 11 – cat. III.178, 12 – cat. III.179, 13 – cat. III.180, 14 – cat. III.181, 15 – cat. III.182, 16 – cat. III.183, 17 – cat. III.184, 18 – cat. III.185, 19 – cat. III.186, 20 – cat. III.187, 21 – cat. III.188, 22 – cat. III.189, 23 – cat. III.190, 24 – cat. III.191, 25 – cat. III.192, 26 – cat. III.193, 27 – cat. III.194, 28 – cat. III.195, 29 – cat. III.196, 30 – cat. III.197, 31 – cat. III.198). 1-31 – bronze. Photo D. Szuwalski, processing P. Kotowicz and G. Glinianowicz



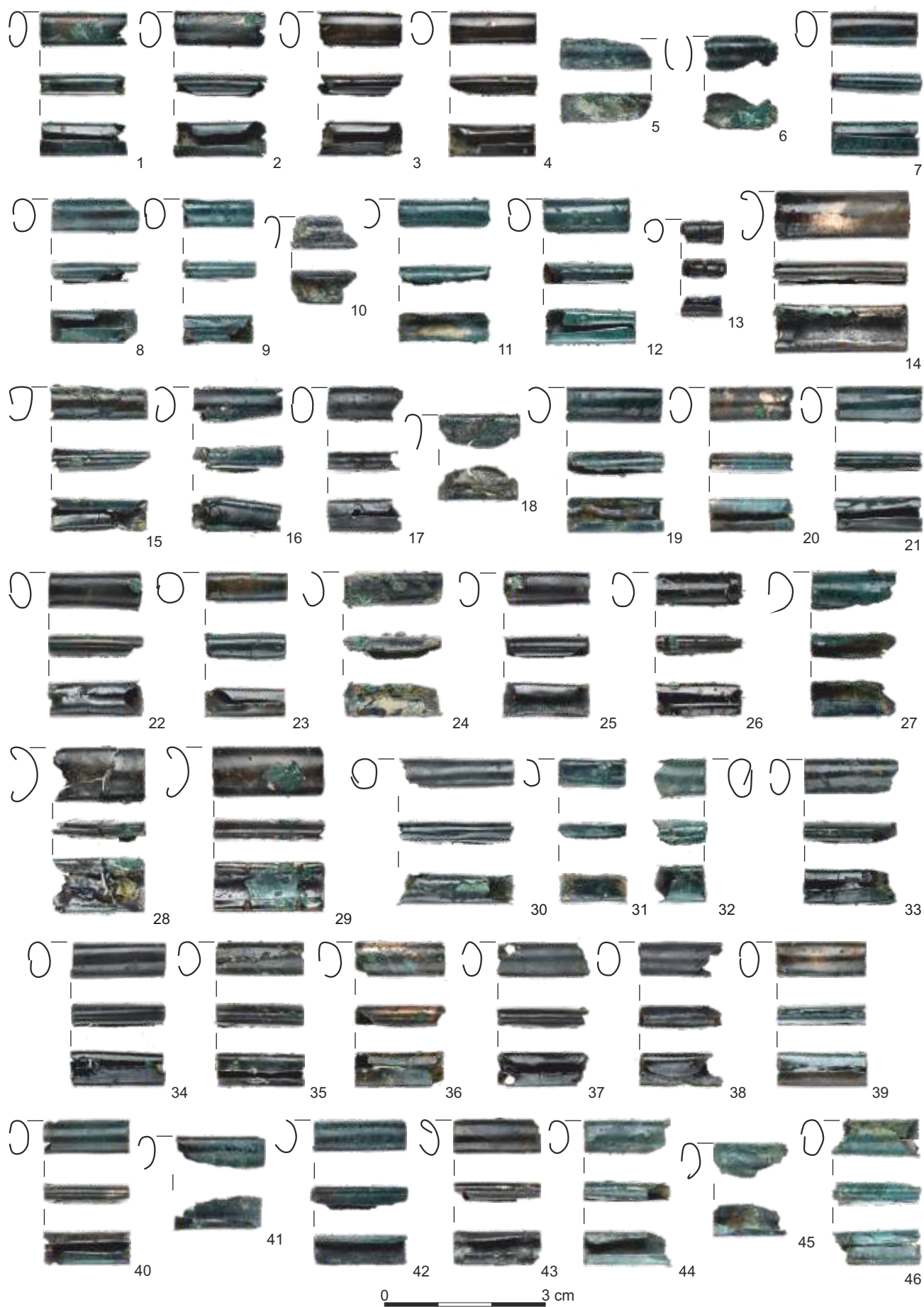
Tabl. XIV. Skarb z Sanoka (Białej Góry): 1-34 – okucia (1 – kat. III.199, 2 – kat. III.200, 3 – kat. III.201, 4 – kat. III.202, 5 – kat. III.203, 6 – kat. III.204, 7 – kat. III.205, 8 – kat. III.206, 9 – kat. III.207, 10 – kat. III.208, 11 – kat. III.209, 12 – kat. III.210, 13 – kat. III.211, 14 – kat. III.212, 15 – kat. III.213, 16 – kat. III.214, 17 – kat. III.215, 18 – kat. III.216, 19 – kat. III.217, 20 – kat. III.218, 21 – kat. III.219, 22 – kat. III.220, 23 – kat. III.221, 24 – kat. III.222, 25 – kat. III.223, 26 – kat. III.224, 27 – kat. III.225, 28 – kat. III.226, 29 – kat. III.227, 30 – kat. III.228, 31 – kat. III.229, 32 – kat. III.231, 33 – kat. III.232, 34 – kat. III.233). 1-34 – brąz.
Fot. D. Szuwalski, oprac. P. Kotowicz i G. Glinianowicz

Pl. XIV. Hoard from Sanok (Biała-Góra): 1-34 – fittings (1 – cat. III.199, 2 – cat. III.200, 3 – cat. III.201, 4 – cat. III.202, 5 – cat. III.203, 6 – cat. III.204, 7 – cat. III.205, 8 – cat. III.206, 9 – cat. III.207, 10 – cat. III.208, 11 – cat. III.209, 12 – cat. III.210, 13 – cat. III.211, 14 – cat. III.212, 15 – cat. III.213, 16 – cat. III.214, 17 – cat. III.215, 18 – cat. III.216, 19 – cat. III.217, 20 – cat. III.218, 21 – cat. III.219, 22 – cat. III.220, 23 – cat. III.221, 24 – cat. III.222, 25 – cat. III.223, 26 – cat. III.224, 27 – cat. III.225, 28 – cat. III.226, 29 – cat. III.227, 30 – cat. III.228, 31 – cat. III.229, 32 – cat. III.231, 33 – cat. III.232, 34 – cat. III.233). 1-34 – bronze.
Photo D. Szuwalski, processing P. Kotowicz and G. Glinianowicz



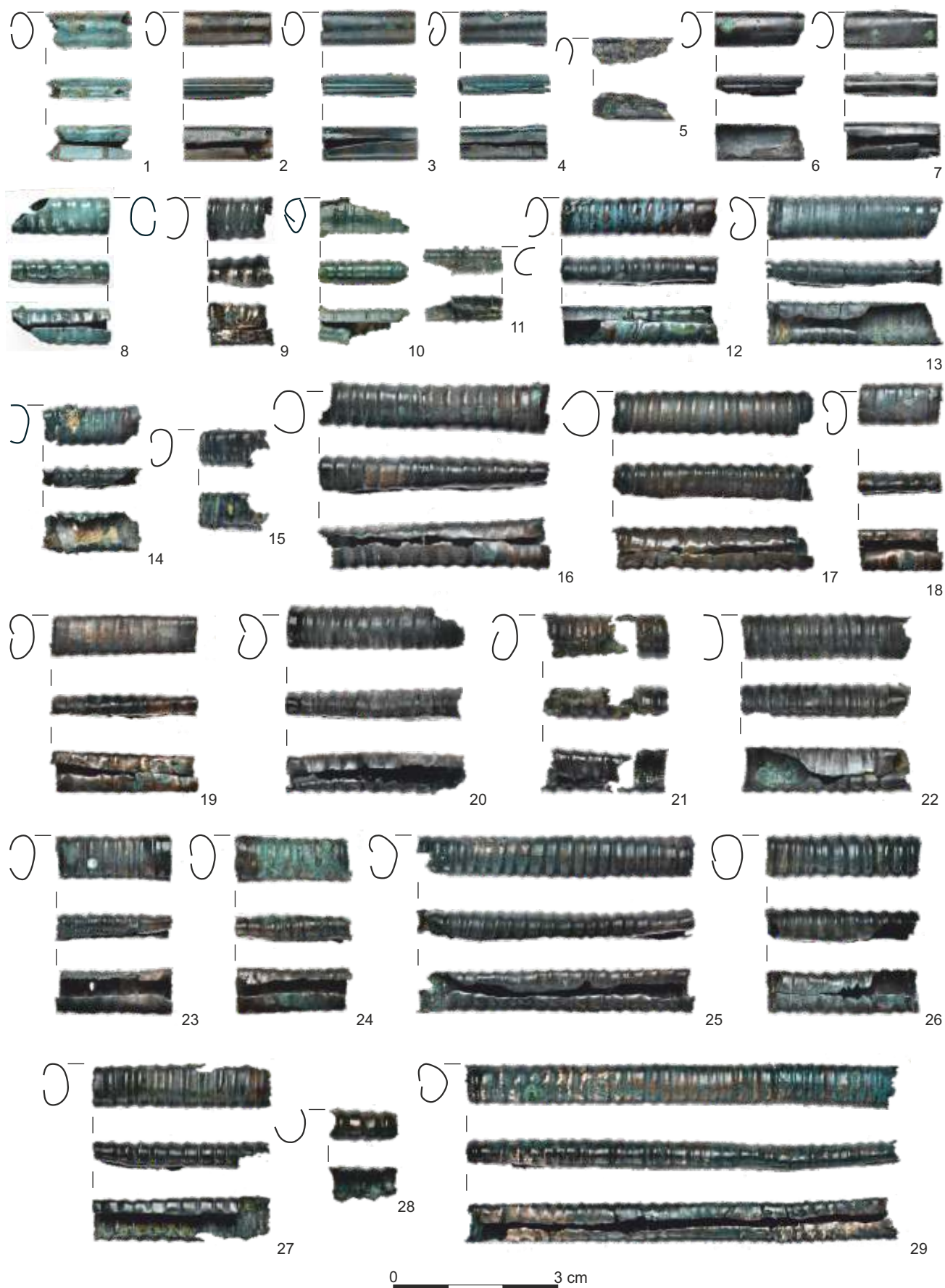
Tabl. XV. Skarb z Sanoka (Białej Góry): 1-46 – okucia (1 – kat. III.234, 2 – kat. III.235, 3 – kat. III.236, 4 – kat. III.237, 5 – kat. III.238, 6 – kat. III.239, 7 – kat. III.240, 8 – kat. III.241, 9 – kat. III.242, 10 – kat. III.243, 11 – kat. III.245, 12 – kat. III.246, 13 – kat. III.247, 14 – kat. III.248, 15 – kat. III.249, 16 – kat. III.250, 17 – kat. III.251, 18 – kat. III.252, 19 – kat. III.253, 20 – kat. III.254, 21 – kat. III.255, 22 – kat. III.256, 23 – kat. III.257, 24 – kat. III.258, 25 – kat. III.259, 26 – kat. III.260, 27 – kat. III.261, 28 – kat. III.263, 29 – kat. III.264, 30 – kat. III.265, 31 – kat. III.268, 32 – kat. III.270, 33 – kat. III.271, 34 – kat. III.272, 35 – kat. III.273, 36 – kat. III.274, 37 – kat. III.275, 38 – kat. III.277, 39 – kat. III.279, 40 – kat. III.280, 41 – kat. III.281, 42 – kat. III.282, 43 – kat. III.283, 44 – kat. III.284, 45 – kat. III.285, 46 – kat. III.286). 1-46 – brąz. Fot. D. Szuwalski, oprac. P. Kotowicz i G. Glinianowicz

Pl. XV. Hoard from Sanok (Biała-Góra): 1-46 – fittings (1 – cat. III.234, 2 – cat. III.235, 3 – cat. III.236, 4 – cat. III.237, 5 – cat. III.238, 6 – cat. III.239, 7 – cat. III.240, 8 – cat. III.241, 9 – cat. III.242, 10 – cat. III.243, 11 – cat. III.245, 12 – cat. III.246, 13 – cat. III.247, 14 – cat. III.248, 15 – cat. III.249, 16 – cat. III.250, 17 – cat. III.251, 18 – cat. III.252, 19 – cat. III.253, 20 – cat. III.254, 21 – cat. III.255, 22 – cat. III.256, 23 – cat. III.257, 24 – cat. III.258, 25 – cat. III.259, 26 – cat. III.260, 27 – cat. III.261, 28 – cat. III.263, 29 – cat. III.264, 30 – cat. III.265, 31 – cat. III.268, 32 – cat. III.270, 33 – cat. III.271, 34 – cat. III.272, 35 – cat. III.273, 36 – cat. III.274, 37 – cat. III.275, 38 – cat. III.277, 39 – cat. III.279, 40 – cat. III.280, 41 – cat. III.281, 42 – cat. III.282, 43 – cat. III.283, 44 – cat. III.284, 45 – cat. III.285, 46 – cat. III.286). 1-46 – bronze. Photo D. Szuwalski, processing P. Kotowicz and G. Glinianowicz



Tabl. XVI. Skarb z Sanoka (Białej Góry): 1-29 – okucia (1 – kat. III.288, 2 – kat. III.289, 3 – kat. III.290, 4 – kat. III.291, 5 – kat. III.293, 6 – kat. III.297, 7 – kat. III.298, 8 – kat. III.300, 9 – kat. III.301, 10 – kat. III.302, 11 – kat. III.303, 12 – kat. III.305, 13 – kat. III.306, 14 – kat. III.307, 15 – kat. III.308, 16 – kat. III.309, 17 – kat. III.310, 18 – kat. III.311, 19 – kat. III.312, 20 – kat. III.313, 21 – kat. III.314, 22 – kat. III.315, 23 – kat. III.316, 24 – kat. III.317, 25 – kat. III.318, 26 – kat. III.319, 27 – kat. III.320, 28 – kat. III.321, 29 – kat. III.322). 1-29 – brąz. Fot. D. Szuwalski, oprac. P. Kotowicz i G. Glinianowicz

Pl. XVI. Hoard from Sanok (Biała-Góra): 1-29 – fittings (1 – cat. III.288, 2 – cat. III.289, 3 – cat. III.290, 4 – cat. III.291, 5 – cat. III.293, 6 – cat. III.297, 7 – cat. III.298, 8 – cat. III.300, 9 – cat. III.301, 10 – cat. III.302, 11 – cat. III.303, 12 – cat. III.305, 13 – cat. III.306, 14 – cat. III.307, 15 – cat. III.308, 16 – cat. III.309, 17 – cat. III.310, 18 – cat. III.311, 19 – cat. III.312, 20 – cat. III.313, 21 – cat. III.314, 22 – cat. III.315, 23 – cat. III.316, 24 – cat. III.317, 25 – cat. III.318, 26 – cat. III.319, 27 – cat. III.320, 28 – cat. III.321, 29 – cat. III.322). 1-29 – bronze. Photo D. Szuwalski, processing P. Kotowicz and G. Glinianowicz



Tabl. XVII. Skarb z Sanoka (Białej Góry): 1-30, 32-33 – okucia (1 – kat. III.323, 2 – kat. III.324, 3 – kat. III.325, 4 – kat. III.326, 5 – kat. III.332, 6 – kat. III.333, 7 – kat. III.334, 8 – kat. III.335, 9 – kat. III.336, 10 – kat. III.337, 11 – kat. III.338, 12 – kat. III.339, 13 – kat. III.340, 14 – kat. III.343, 15 – kat. III.344, 16 – kat. III.346, 17 – kat. III.347, 18 – kat. III.348, 19 – kat. III.349, 20 – kat. III.350, 21 – kat. III.351, 22 – kat. III.352, 23 – kat. III.353, 24 – kat. III.354, 25 – kat. III.355, 26 – kat. III.356, 27 – kat. III.357, 28 – kat. III.358, 29 – kat. III.361, 30 – kat. III.362, 32 – kat. III.367, 33 – kat. III.368), 31 – skręt *saltalone* (kat. III.365), 34 – zawieszka (kat. III.369). 1-34 – brąz. Fot. D. Szuwalski, oprac. P. Kotowicz i G. Glinianowicz

Pl. XVII. Hoard from Sanok (Biała-Góra): 1-30, 32-33 – fittings (1 – cat. III.323, 2 – cat. III.324, 3 – cat. III.325, 4 – cat. III.326, 5 – cat. III.332, 6 – cat. III.333, 7 – cat. III.334, 8 – cat. III.335, 9 – cat. III.336, 10 – cat. III.337, 11 – cat. III.338, 12 – cat. III.339, 13 – cat. III.340, 14 – cat. III.343, 15 – cat. III.344, 16 – cat. III.346, 17 – cat. III.347, 18 – cat. III.348, 19 – cat. III.349, 20 – cat. III.350, 21 – cat. III.351, 22 – cat. III.352, 23 – cat. III.353, 24 – cat. III.354, 25 – cat. III.355, 26 – cat. III.356, 27 – cat. III.357, 28 – cat. III.358, 29 – cat. III.361, 30 – cat. III.362, 32 – cat. III.367, 33 – cat. III.368), 31 – *saltalone* type coiled tube (cat. III.365); 34 – pendant (cat. III.369). 1-34 – bronze. Photo D. Szuwalski, processing P. Kotowicz and G. Glinianowicz

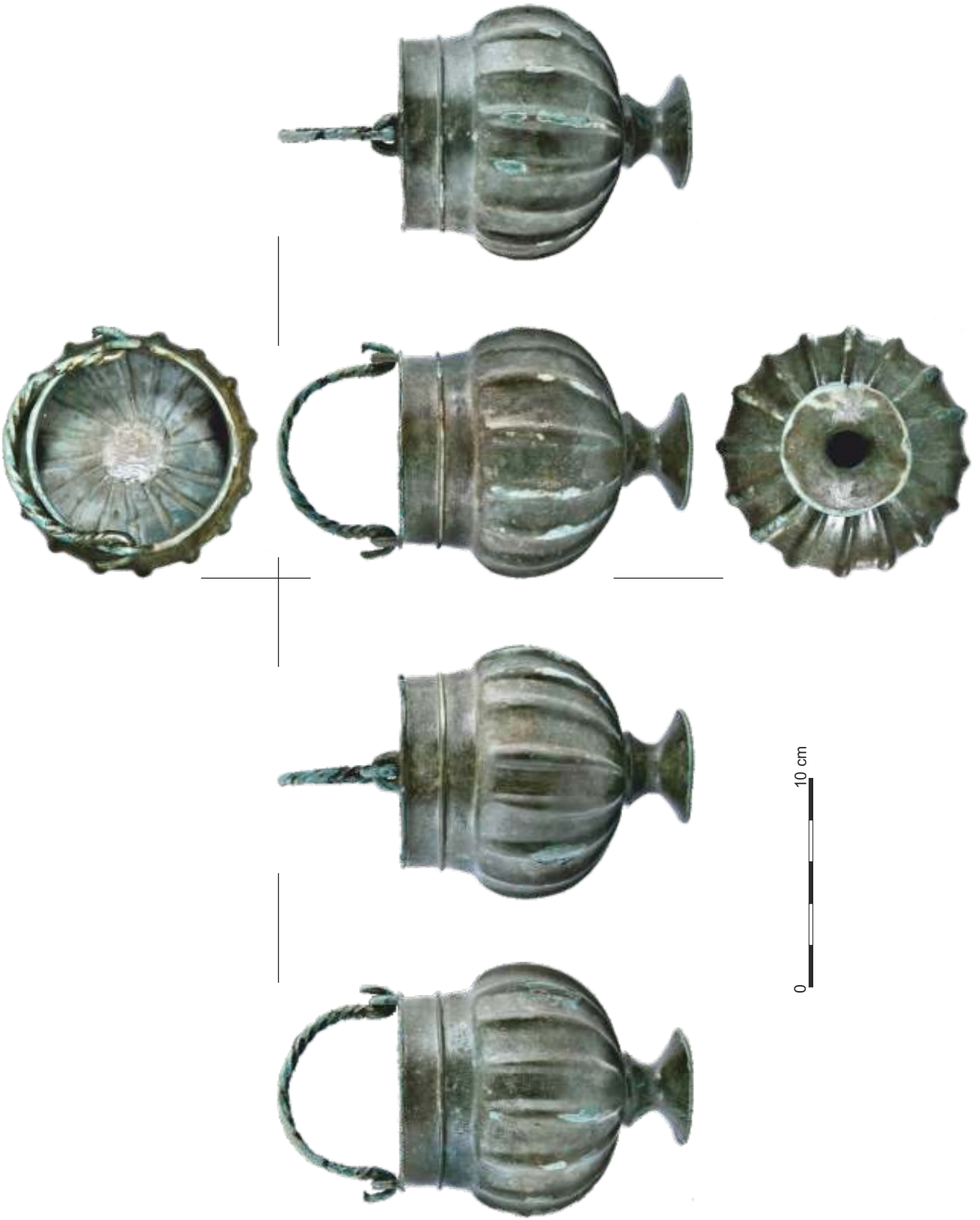


Tabl. XVIII. Skarb z Sanoka (Białej Góry): 1 – pierścień (kat. III.370), 2-6 – paciorki (2 – kat. III.371, 3 – kat. III.372, 4 – kat. III.373, 5 – kat. III.374, 6 – kat. III.375), 7-22 – okucia (7 – kat. III.378, 8 – kat. III.379, 9 – kat. III.380, 10 – kat. III.383, 11 – kat. III.384-385, 12 – kat. III.386-389, 13 – kat. III.390, 14 – kat. III.391, 15 – kat. III.392, 16 – kat. III.393, 17 – kat. III.394, 18 – kat. III.399, 19 – kat. III.400, 20 – kat. III.401, 21 – kat. III.407, 22 – kat. III.410-416). 1 – brąz, 2-22 – żelazo. Fot. D. Szuwalski, oprac. P. Kotowicz i G. Glinianowicz

Pl. XVIII. Hoard from Sanok (Biała-Góra): 1 – ring (cat. III.370), 2-6 – beads (2 – cat. III.371, 3 – cat. III.372, 4 – cat. III.373, 5 – cat. III.374, 6 – cat. III.375), 7-22 – fittings (7 – cat. III.378, 8 – cat. III.379, 9 – cat. III.380, 10 – cat. III.383, 11 – cat. III.384-385, 12 – cat. III.386-389, 13 – cat. III.390, 14 – cat. III.391, 15 – cat. III.392, 16 – cat. III.393, 17 – cat. III.394, 18 – cat. III.399, 19 – cat. III.400, 20 – cat. III.401, 21 – cat. III.407, 22 – cat. III.410-416). 1 – bronze, 2-22 – iron. Photo D. Szuwalski, processing P. Kotowicz and G. Glinianowicz

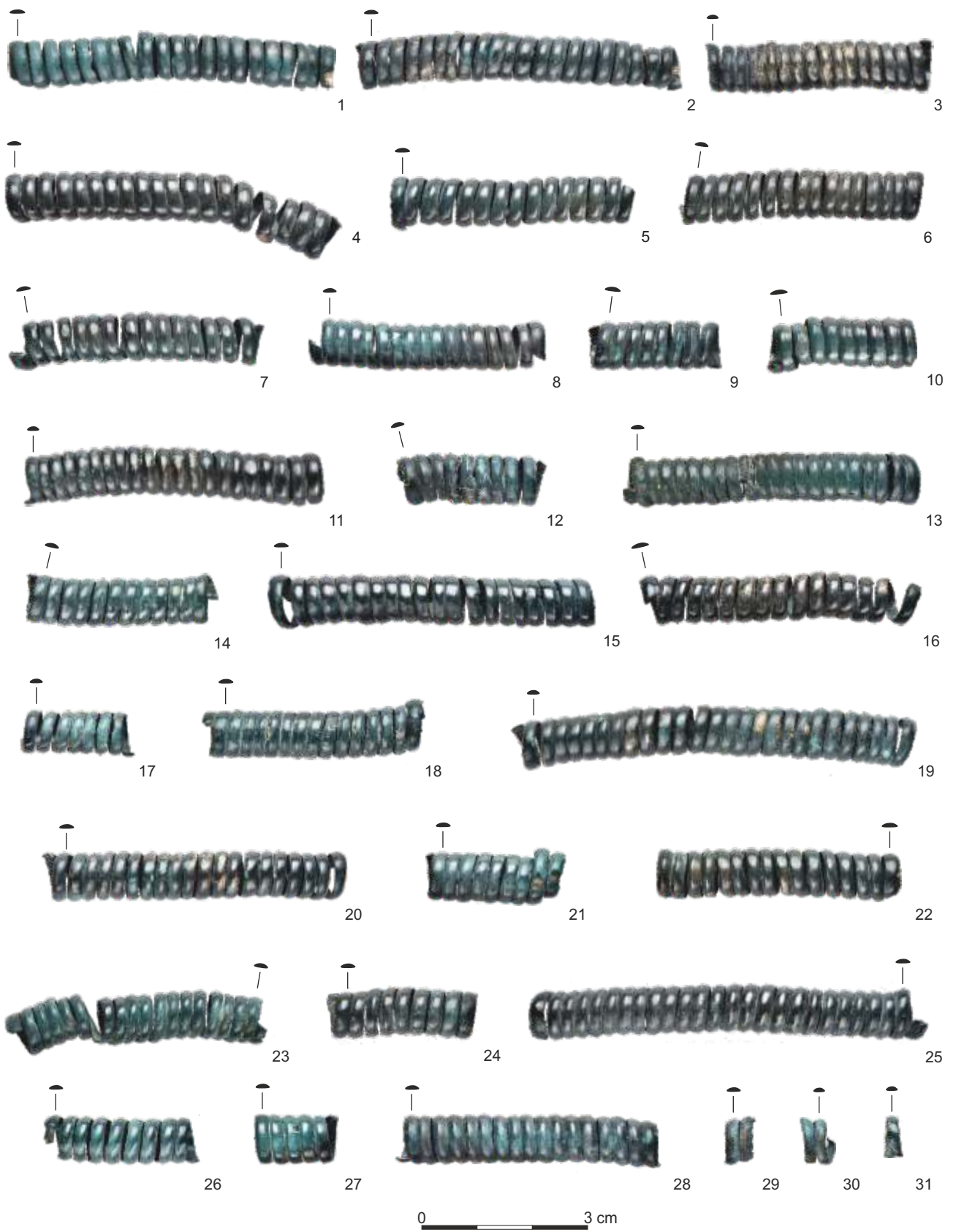


Tabl. XIX. Skarb z Woli Sękowej (pow. sanocki). Naczynie brązowe (kat. IV.1). Fot. D. Szuwalski, oprac. P. Kotowicz
Pl. XIX. Hoard from Wola Sękowa (Sanok distr.). Bronze vessel (cat. IV.1). Photo D. Szuwalski, processing P. Kotowicz

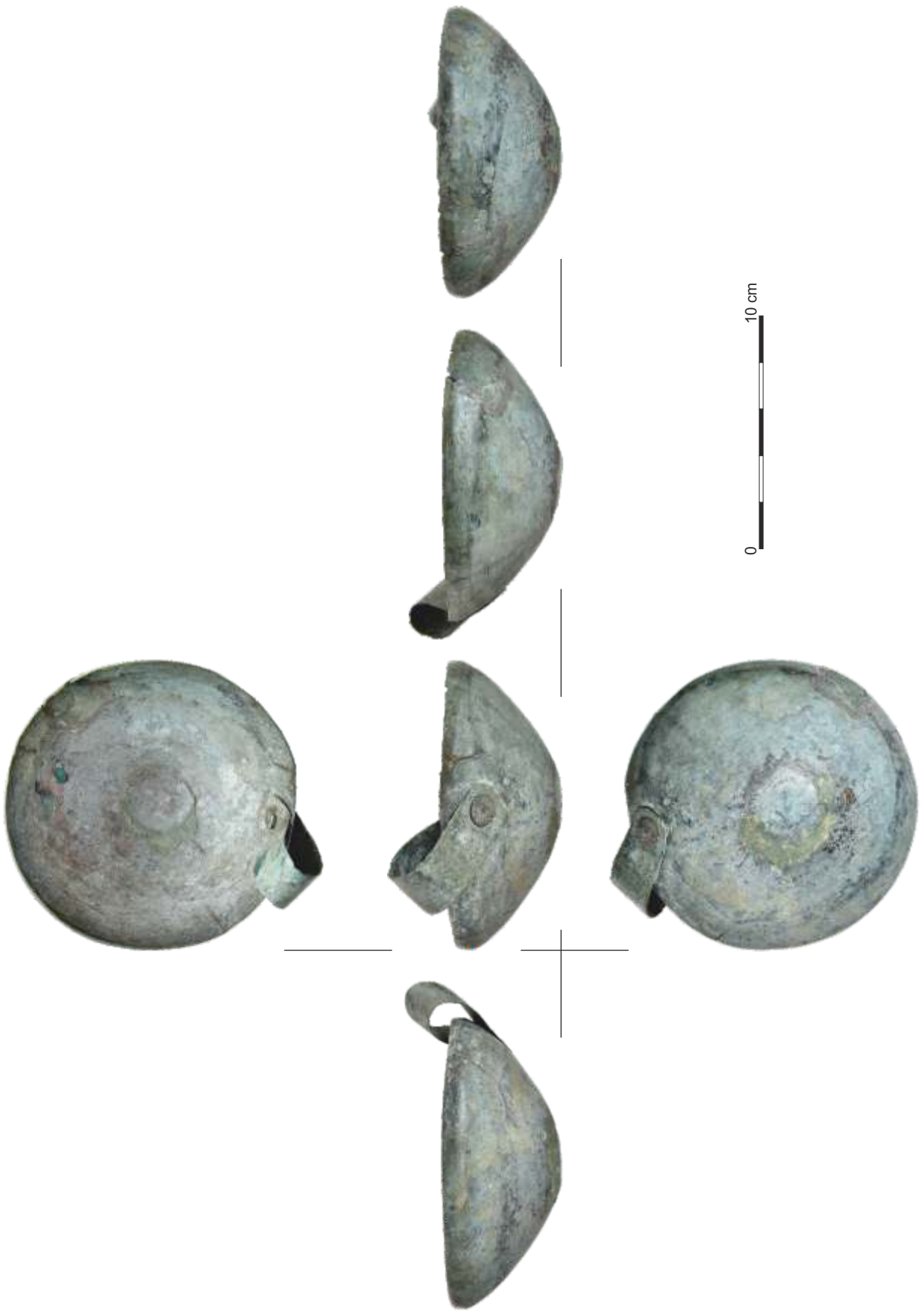


Tabl. XX. Skarb z Woli Sękowej (pow. sanocki): 1-31 – skręty *saltaleoni* (1 – kat. IV.2, 2 – kat. IV.3, 3 – kat. IV.4, 4 – kat. IV.5, 5 – kat. IV.6, 6 – kat. IV.7, 7 – kat. IV.8, 8 – kat. IV.9, 9 – kat. IV.10, 10 – kat. IV.11, 11 – kat. IV.12, 12 – kat. IV.13, 13 – kat. IV.14, 14 – kat. IV.15, 15 – kat. IV.16, 16 – kat. IV.17, 17 – kat. IV.18, 18 – kat. IV.19, 19 – kat. IV.20, 20 – kat. IV.21, 21 – kat. IV.22, 22 – kat. IV.23, 23 – kat. IV.24, 24 – kat. IV.25, 25 – kat. IV.26, 26 – kat. IV.27, 27 – kat. IV.28, 28 – kat. IV.29, 29 – kat. IV.30, 30 – kat. IV.31, 31 – kat. IV.32). 1-31 – brąz. Fot. D. Szuwalski, oprac. P. Kotowicz

Pl. XX. Hoard from Wola Sękowa (Sanok distr.): 1-31 – *saltaleoni* type coiled tube (1 – cat. IV.2, 2 – cat. IV.3, 3 – cat. IV.4, 4 – cat. IV.5, 5 – cat. IV.6, 6 – cat. IV.7, 7 – cat. IV.8, 8 – cat. IV.9, 9 – cat. IV.10, 10 – cat. IV.11, 11 – cat. IV.12, 12 – cat. IV.13, 13 – cat. IV.14, 14 – cat. IV.15, 15 – cat. IV.16, 16 – cat. IV.17, 17 – cat. IV.18, 18 – cat. IV.19, 19 – cat. IV.20, 20 – cat. IV.21, 21 – cat. IV.22, 22 – cat. IV.23, 23 – cat. IV.24, 24 – cat. IV.25, 25 – cat. IV.26, 26 – cat. IV.27, 27 – cat. IV.28, 28 – cat. IV.29, 29 – cat. IV.30, 30 – cat. IV.31, 31 – cat. IV.32). 1-31 – bronze. Photo D. Szuwalski, processing P. Kotowicz



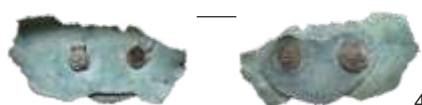
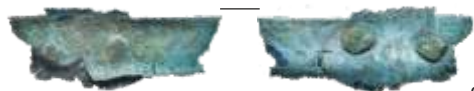
Tabl. XXI. Skarb z Zarszyna (pow. sanocki). Czarka brązowa (kat. V.1). Fot. D. Szuwalski, oprac. P. Kotowicz
Pl. XXI. Hoard from Zarszyn (Sanok distr.). Bronze cup (cat. V.1). Photo D. Szuwalski, processing P. Kotowicz



Tabl. XXII. Skarb z Zarszyna (pow. sanocki). Czarka brązowa (kat. V.2). Fot. D. Szuwalski, oprac. P. Kotowicz
Pl. XXII. Hoard from Zarszyn (Sanok distr.). Bronze cup (cat. V.2). Photo D. Szuwalski, processing P. Kotowicz



Tabl. XXIII. Skarb z Zarszyna (pow. sanocki): 1-7 – Czarki brązowe i ich fragmenty (1-4 – kat. V.3, 5-7 – kat. V.4). Fot. D. Szuwalski, oprac. P. Kotowicz
Pl. XXIII. Hoard from Zarszyn (Sanok distr.). Bronze cups and their fragments (1-4 – cat. V.3, 5-7 – cat. V.4). Photo D. Szuwalski, processing P. Kotowicz



1

2

3

4



5

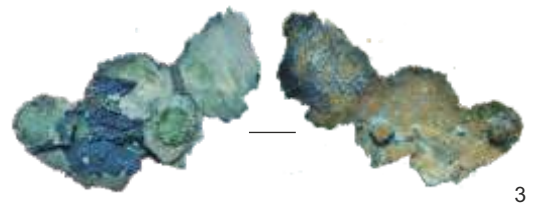


0 10 cm

6

7

Tabl. XXIV. Skarb z Zarszyna (pow. sanocki): 1-7 – Czarka brązowa i fragmenty czarek brązowych (1-3 – kat. V.5, 4-5 – kat. V.6). Fot. D. Szuwalski, oprac. P. Kotowicz
Pl. XXIV. Hoard from Zarszyn (Sanok distr.). Bronze cup and fragments of bronze cups (1-4 – cat. V.5, 4-5 – cat. V.6). Photo D. Szuwalski, processing P. Kotowicz



0 10 cm